

PRODUCT END-OF-LIFE DISASSEMBLY INSTRUCTIONS

Product Category: Personal Computers

Marketing Name / Model

Lanix Titan Mini

Purpose: The document is intended for use by end-of-life recyclers. It provides the instructions for the disassembly of Lanix products to remove components and materials requiring selective treatment, as defined by EU directive 2012/19/EC, Waste Electrical and Electronic Equipment (WEEE).

1.0 Items Requiring Selective Treatment

1.1 Items listed below are classified as requiring selective treatment.

1.2 Enter the quantity of items contained within the product which require selective treatment in the right column, as applicable.

Item Description	Notes	Quantity of items included in product
Printed Circuit Boards (PCB) or Printed Circuit Assemblies (PCA)	Mother Board, SSD, RAM, External Keyboard (KB), External Mouse	5
Batteries, excluding Li-Ion batteries. This includes standard alkaline, coin or button style batteries	RTC/CMOS Battery	1
Li-Ion batteries. Includes all Li-Ion batteries if more than one is provided with the product (such as a detachable notebook keyboard battery, etc.)		
Mercury-containing components		
Liquid Crystal Displays (LCD) with a surface greater than 100 sq cm	Panel LCD	
Cathode Ray Tubes (CRT)		
Capacitors / condensers (Containing PCB/PCT)		
Electrolytic Capacitors / Condensers measuring greater than 2.5 cm in diameter or height		
External electrical cables and cords	External Power Supply	1
Gas Discharge Lamps		
Plastics containing Brominated Flame Retardants weighing > 25 grams (not including PCBs or PCAs already listed as a separate item above)		
Components and parts containing toner and ink, including liquids, semi-liquids (gel/paste) and toner		
Components and waste containing asbestos		

Components, parts and materials containing refractory ceramic fibers		
Components, parts and materials containing radioactive substances		

2.0 Tools Required

List the type and size of the tools that would typically be used to disassemble the product to a point where component and materials requiring selective treatment can be removed.

Tool Description	Tool Size (If applicable)
Screwdriver	PHILLIPS PH2
Plastic spudger	

3.0 Product Disassembly Process

3.1 List the basic steps that should typically be followed to remove components and materials requiring selective treatment including the required steps to remove the external enclosure. For End-of-Life product disassembly instructions of external accessories including external keyboard (KB), external Power Supply (EPS), external cables and cords, and external mouse refer to the following URL: End-of-Life Product Disassembly Instructions (lanix.com)

1. Remove the 4 screws from the Bottom Cover.
2. Remove the Top Cover. (Plastic spudger)
3. Disconnect the HDD cable.
4. Remove the screw from the SSD and remove the SSD.
5. Remove Memory.
6. Disconnect and remove the Coin Battery
7. Remove the motherboard screws and remove the motherboard from the case.
8. Disconnect and remove the Power Button and remove
9. Remove the screws and Remove Fan.
10. Remove the Fan power connector from the Motherboard.
11. Remove the CPU cooler screws and remove the CPU cooler from the case.

3.2 2 Location of components requiring selective treatment. The photos and/or graphics below identify the location of the parts or components requiring selective treatment within the main unit.

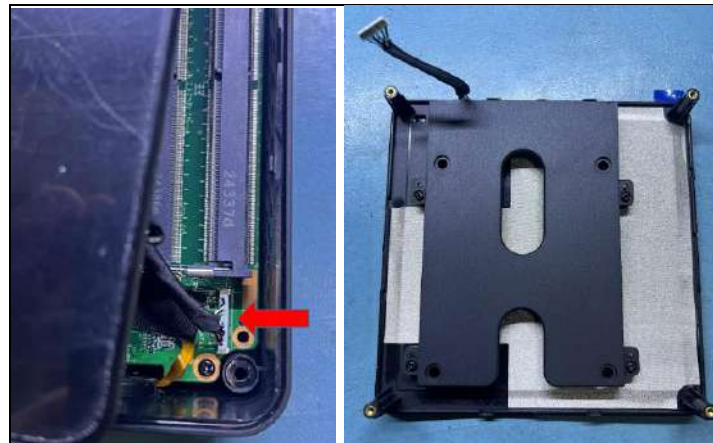
1. Remove the 4 screws from the Bottom Cover. (Phillips Screwdriver)



2. Remove the Top Cover. (Plastic spudger)



3. Disconnect the HDD cable.



4.Remove the screw from the SSD and remove the SSD.



5.Remove Memory.



6.Disconnect and remove the Coin Battery



7.Remove the motherboard screws and remove the motherboard from the case.



8.Disconnect and remove the Power Button and remove



9.Remove the screws and Remove Fan



10. Remove the Fan power connector from the Motherboard



11. Remove the CPU cooler screws and remove the CPU cooler from the case.



12. External Power Supply



3.2 Location of components requiring selective treatment

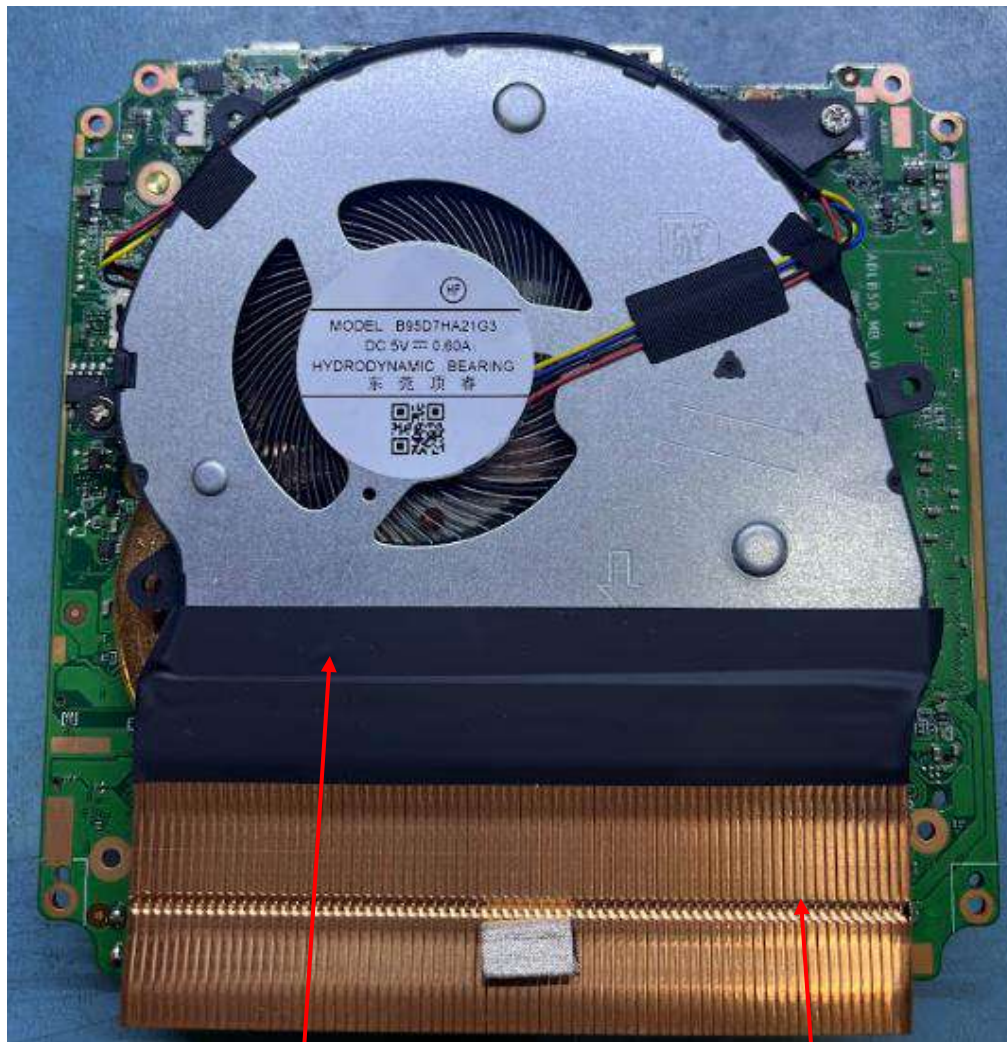


M.2 SSD

RTC Battery

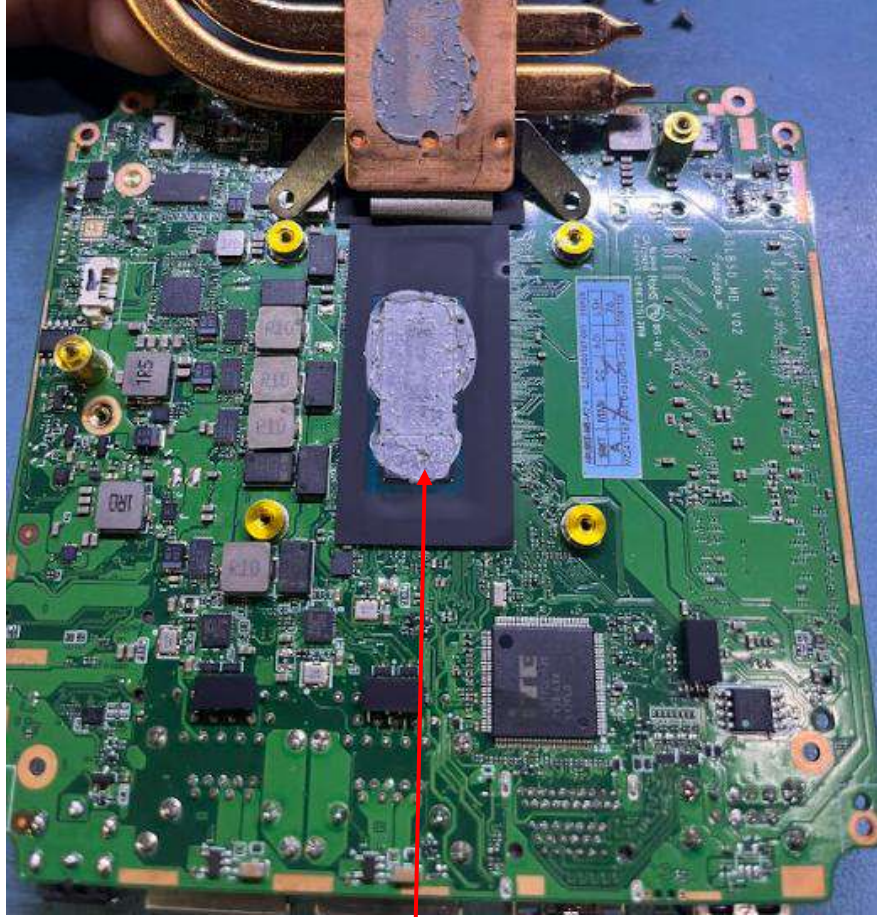
Motherboard

RAM Memory

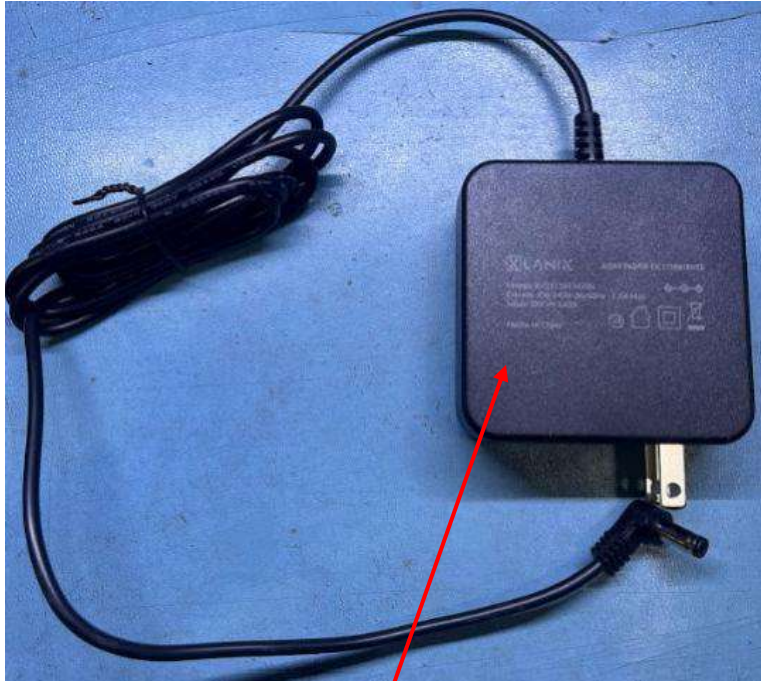


Fan

CPU Cooler



CPU



External Power
Supply